



Employment Support Team

41d St Catherine's Road
Perth
PH1 5SJ

Tel 01738 477638

Website: www.pkc.gov.uk/est

Email: HCCEmploymentSupport@pkc.gov.uk

The Employment Support Team's services can advise and help those who have an acquired brain injury, learning disabilities, mental health issues or autistic spectrum diagnosis, and their families and carers, or are in receipt of services from the Drug & Alcohol Team.

Referral **information and criteria** can be found here:

<http://www.pkc.gov.uk/article/14334/Referral-criteria-and-application-forms>

Our **Referral Form** is here:

http://www.pkc.gov.uk/media/38716/EST-Referral-Form/pdf/Referral_Form_for_EST_services

We are also a proud & leading member of the Perth & Kinross
Employability Network

PERTH AND KINROSS

employability
network

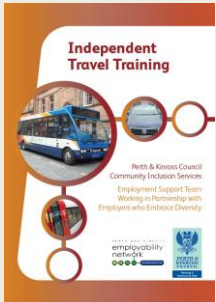

<http://pkemploy.net>

Downloads available from our website www.pkc.gov.uk/est



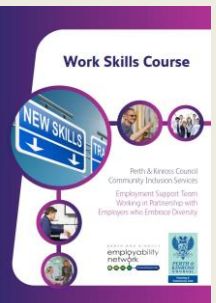
Employment Support Team General Guide

Information for individuals and their parents/carers on the employment support teams services.



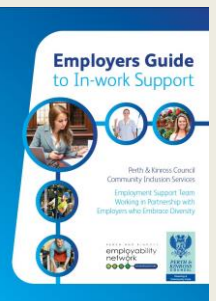
Independent Travel Training

For those requiring support to be able to travel independently to get to and from their home and workplace.



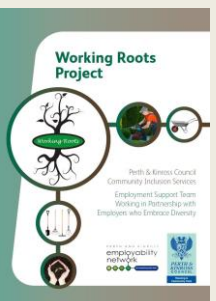
Work Skills Course

A course that runs throughout the year to enhance peoples employability skills such as interview techniques, job applications, completing CV's etc.



Employers Guide

Information for employers who employ or are considering employing someone facing additional challenges to work.



Working Roots

An employment support team project that offers the development of skills to participants in sectors including retail and horticulture.



Green 2 Go

A project that supports people to gain skills and experience in the recycling industry.



Additional versions are also available online in Easy Read Format